




# LinX 10

**For the first time, a CIJ printer you can easily move between lines.**

Designed for single shift production, the LinX 10 provides high quality, two line print onto any dry substrate. With the smallest footprint on the market, you can move it to where you need to code. Size isn't everything though. Code setup is simple, making product changeovers quick and error-free, and a robust design provides you with the high level of reliability you expect from LinX.

## Compact and portable

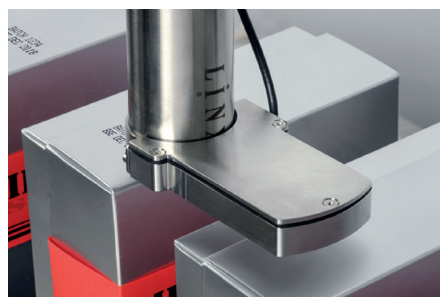
- The LinX 10 occupies a fraction of the space of other CIJ printers, plus it can be fixed directly to your production line, ideal where space is limited
- Its lightweight design, carry handle and printhead dock make it easy to move to where you need to code
- A unique, integrated line speed sensor dispenses with the need for extra equipment, making setup quick, plus it ensures your products are coded at the right time, in the right place.

## Truly simple coding

- Colour touch screen with icons which are easy to understand – makes code setup and selection truly simple
- Use product imagery to select jobs – for error-free code setup
- Fluids are contained in sealed cartridges, which simply click into place, even during printing – no mess, no tools, no mistakes
- Service the printer yourself quickly using the on-screen instructions, and plan servicing around your production schedules – reduce your downtime.

## A robust coding solution at an affordable price

- The printer's stainless steel enclosure has an IP55 rating – suitable for most coding environments
- LinX's industry-leading printhead is completely sealed for continual reliable operation – minimal cleaning required to maintain optimal print quality
- Quick, clean starts every time with autoflush – LinX's automatic printhead cleaning feature. Leave the printer unused for a month and it will still print right first time with no extra cleaning or processes – saving you time and consumables.



## Linx 10

### PRINthead



### SIDE ELEVATION



### TOP ELEVATION



### FRONT ELEVATION



## Technical Specifications

### PRINTING SPEEDS AND SIZES

Lines of print supported: 2
Message height range: 1.8mm to 5.6mm
Character width range: 1.7mm to 4.38mm
Maximum line speed: 1 line 2.66m/s, 2 lines 1.54m/s
Maximum number of characters per second: 700
Maximum message length: > 1m
Recommended distance from printhead to substrate: 12mm

### HARDWARE FEATURES

Service Module: Easi-Change® Service Module with 2000 hours between scheduled maintenance
Printhead flushing: Typical cleaning interval 1 month (35 starts and stops)
Fluid cartridges: Cartridge system with RFID
Fluid low warning: Up to 2 hours warning from fluid 'low' to 'empty'
Operation angle: Allows tilt up to +/- 2 degrees in operation. Supports printing from top, side and bottom. Transportation can tolerate 45 degrees
Mobility: Easy to carry, light weight design that can easily be moved between production lines
Display: 7 inch, high brightness back-lit, full colour touch screen with tough, solvent resistant polymer cover
Alerts: Audio indicator of error conditions and screen alarm as a screen saver
Gear pump: Durable with no scheduled changes required
Extended shutdowns: Up to 4 weeks possible without printer flushing or draining

### SOFTWARE FEATURES

Step by step message creation and editing
Single press print start, print pause and printer shutdown
Password protected functions with custom profiles for secure, mistake-proof operation
Job selection using real product images
On-screen help and diagnostics

### Live message preview

On-screen instructions for changing Service Module, ink and solvent refilling and other functions
31 languages
PrintSync® automatic font and message format, based on style selected and line speed
Simple line speed and shaft encoder set up wizard, for installation on new production lines
On-screen keyboards
Message store and printer settings back up, copy and restore using USB storage device

### MESSAGE PRINTING FACILITIES

Text, symbols and numbers
Bold character printing (up to 10 times)
Upper-case and lower-case text
Rotated character (tower) printing
Variable character height and width
Product image message selection
Graphics and logos can be imported into the printer as Bitmap files using the USB port
Automatic formats for printing dates and times (using the printer's internal clock)
Sequential numbering, forward and backward counting, variable intervals
Automatic date forward function. Add any number of seconds, minutes, hours to the current time, or any number of days, weeks or months to the current date
Number of messages stored: Up to 1000 using internal printer memory (depending on message content), more can be stored using a USB storage device

### PRINthead CHARACTERISTICS

Nozzle size: 62µm
Conduit: Flexible and durable dual tube conduit, solvent resistant
Printhead: Mark 13. Stainless steel cover tube (suitable for use with magnetic and non-magnetic conveyors)

### DYE-BASED INK RANGE

Black fast-drying ink 1240 (MEK base)
Black mixed base ink 3103 (non-MEK)

### CONNECTIONS/INTERFACING

Product detector
External 24 volt alarm output
Optional shaft encoder
USB port for message and printer settings back up and restore

### ACCESSORIES/OPTIONS

CLARiSOFT® message creation software – messages can be created on a PC and imported onto printer using the printer USB port
A conveyor mounting bracket
Carry handle and printhead holder will be available as factory fit option

### PHYSICAL CHARACTERISTICS

Enclosure: Stainless steel
IP environmental protection rating: IP55
Mounting options: Conveyor mount, 8900 trolley with Linx 10 adaptor, bench or table
Operating temperature range: 5-45°C
Humidity range (relative humidity, non-condensing): 10-90%
External power supply: 100-230V, 50/60Hz
Power consumption: 32W (typical while printing)
Weight (including fluids and printhead): 11kg
Conduit: 1.3m
Conduit management: Simply fixed in place on printer during transport
Handle: Optional

### REGULATORY APPROVALS

• GS • CE • EAC • NRTL • FCC
------------------------------